

ClassicBond Bonding Adhesive

Suitable for use with ClassicBond and ClassicBond Pro membranes. ClassicBond high-strength, solvent-based bonding adhesive allows fast, effective bonding of ClassicBond membrane to most building materials. The bonding adhesive is generally used at angle changes, steep slope and vertical details on the roof. For commercial installations and projects in excess of 100m² the entire roof area should be bonded with ClassicBond Bonding Adhesive.

Features and Benefits

- Coverage rates of 2.35-3 m²/litre
- Fast Curing
- Available in 1L, 2.5L & 5 Litre cans

Suitable Surfaces

ClassicBond Bonding Adhesive is specially formulated for application with a spreader brush or short pile roller. This highly versatile adhesive will bond ClassicBond EPDM to a large variety of surfaces including brick, render, timber, metals, plastics and approved insulation. Not to be used with expanded polystyrene.



Surface Preparation

1. Surfaces should be clean, dry, frost free and free from dust, grease, loose material and other contaminants.
2. For timber and composite boards the surface must be sound and not be degraded.
3. Stir adhesive before vigorously before use.
4. Prolonged job site storage at temperatures in excess of 30°C may affect product shelf life.

Application

1. Stir before use, apply using a short pile roller or spreader brush to achieve a thin even coating of adhesive to both surfaces to be mated together. A larger quantity of adhesive may be necessary for open texture and rough surfaces.

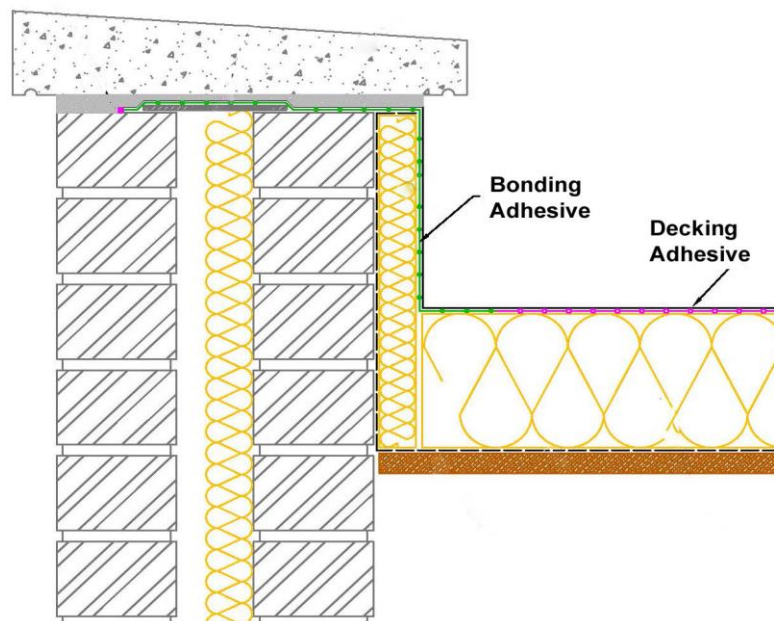
2. Allow the solvent content to evaporate before bonding the materials. The time required will depend on the temperature and humidity. On absorbent or permeable materials such as timber, bonding may be possible within a matter of 2-3 minutes of application; on non-absorbent or non-permeable materials such as metal a minimum of 15 minutes should elapse before the surfaces are bonded.

3. The effective open time range will vary dependant on temperature and ambient conditions. Care should be taken to ensure the adhesive is fully dry before surfaces are mated together.

4. Carefully align the surface to be mated, the roof sheet should be pressed onto the surface to be mated. Apply pressure to the surfaces with a roller to ensure full adhesion, smooth membrane and remove any trapped air.

5. Trimming of membrane may be commenced immediately.

ClassicBond Bonding Adhesive	
Base	Polychloroprene Rubber / Phenolic Resin
Viscosity	Approx. 6000 - 6500 Cps (at make)
Specific Gravity	Approx. 0.8
Colour	Golden brown
Tack Life	2 - 20 mins
Flash Point	-22 °C
Coverage	Approx. 2.35-3 m ² /ltr
Shelf Life	18 months between 5°C and 25°C



*Simplified installation diagram, not showing RUSS.

Before using this product please ensure that you have been supplied with and have read carefully the following information:

1. The product labels
2. ClassicBond Bonding Adhesive Material Safety Data Sheet

Exclusive British Isles Distributors for Carlisle-SynTec and ClassicBond EPDM single ply roofing materials.

Flex-R, Sandwood House, Hillbottom Road, Sands Industrial Estate, High Wycombe, Bucks, HP12 4HJ. Tel: +44 (0)1494 448792